

## ALBANY CITY COUNCIL AGENDA

---

**Monday, January 12, 2026  
4:00 p.m.**

Council Chambers, City Hall  
333 Broadalbin Street SW

Watch on YouTube: <https://www.youtube.com/user/cityofalbany>

Please help us get Albany's work done.

Be respectful and refer to the rules of conduct posted by the main door to the Chambers and on the website.

1. Call to order and roll call
2. Public Comment
3. ODOT Multiagency Update Corvallis to Albany Pathway, ODOT, Benton County, Parametrix [Pages 2-24] Information
4. Business from the council
5. City manager report
6. Adjournment

*This meeting is accessible to the public via video connection. The location for in-person attendance is accessible to people with disabilities. If you have a disability that requires accommodation, please notify city staff at least 48 hours in advance of the meeting at:*  
[cityrecorder@albanyoregon.gov](mailto:cityrecorder@albanyoregon.gov).

*Testimony provided at the meeting is part of the public record. Meetings are recorded, capturing both in-person and virtual participation, and are posted on the City website.*

# Corvallis to Albany Shared Use Path Project

NE Merloy Ave to Rainwater Lane NW

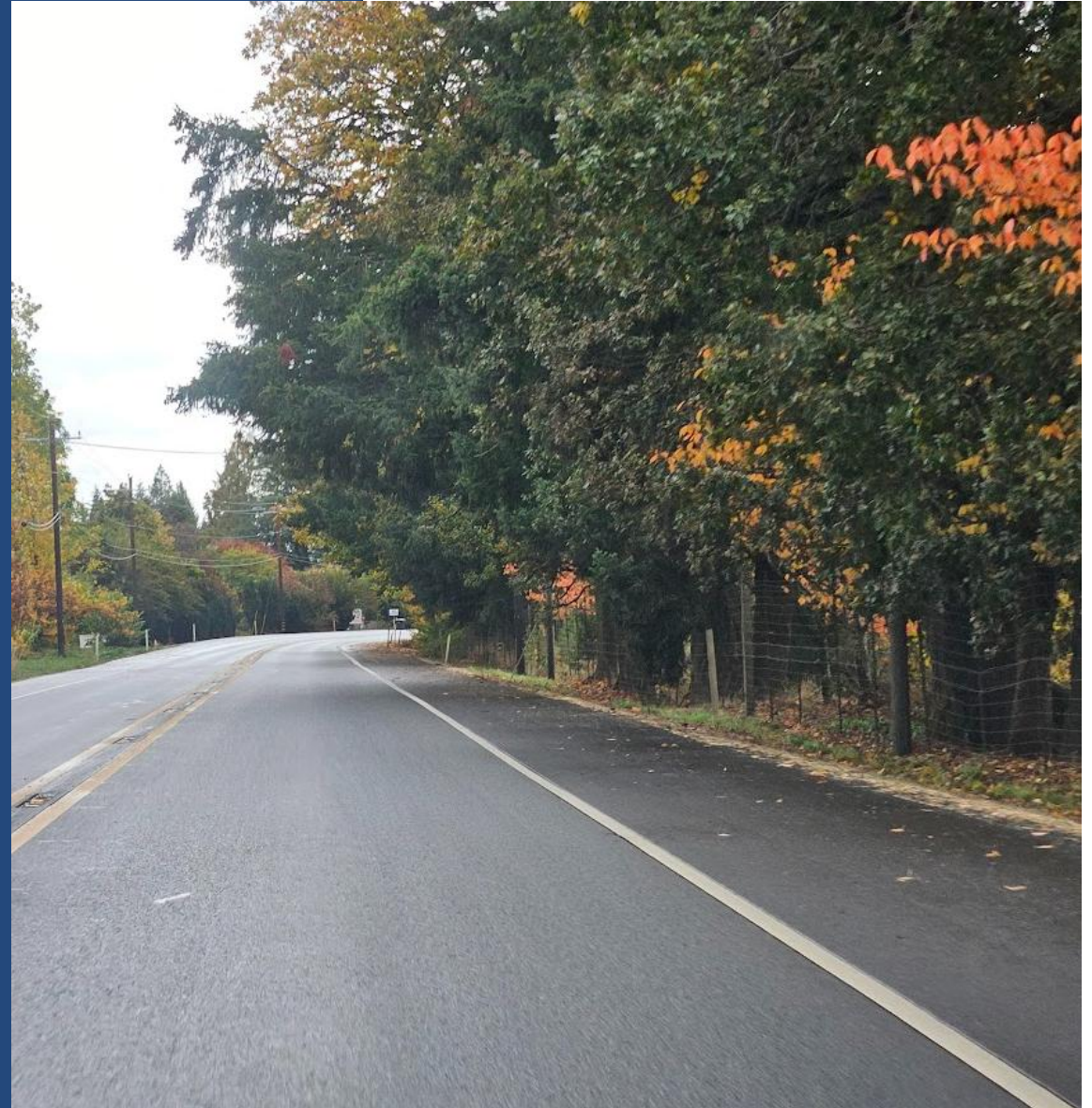
## Project Update



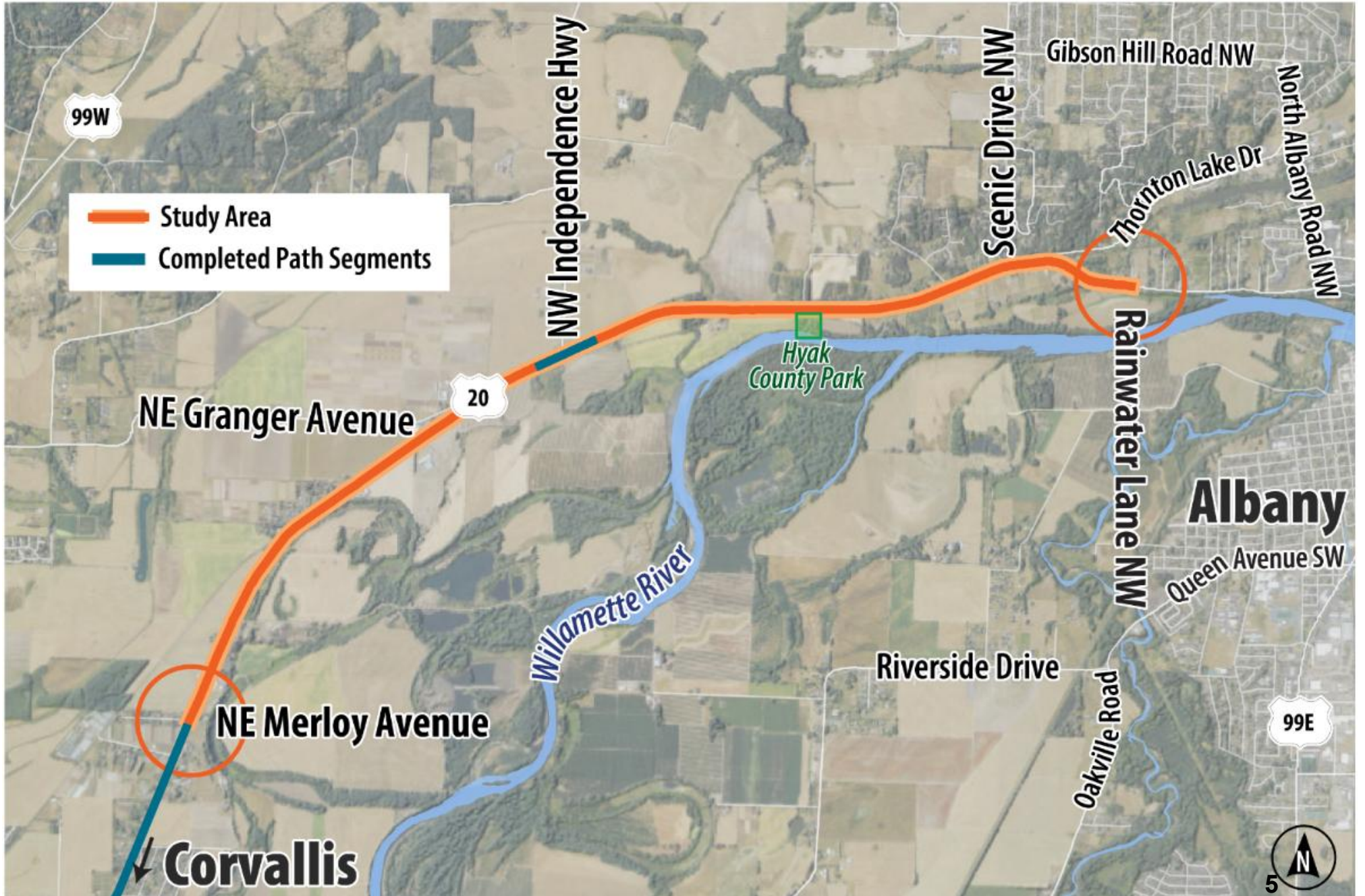
# Agenda

- Project introduction
- Alignment screening results
- Outreach Milestone #1 results
- Next steps

# Project Introduction



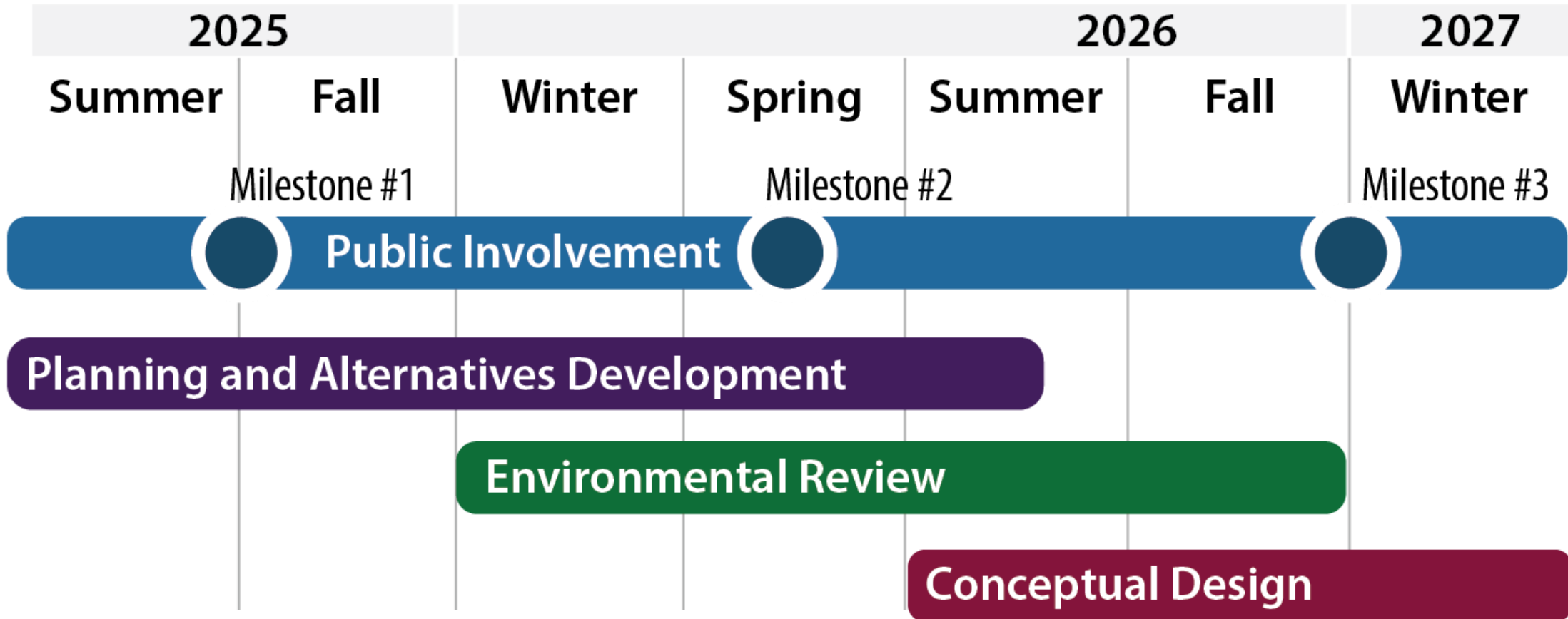
# Study Area



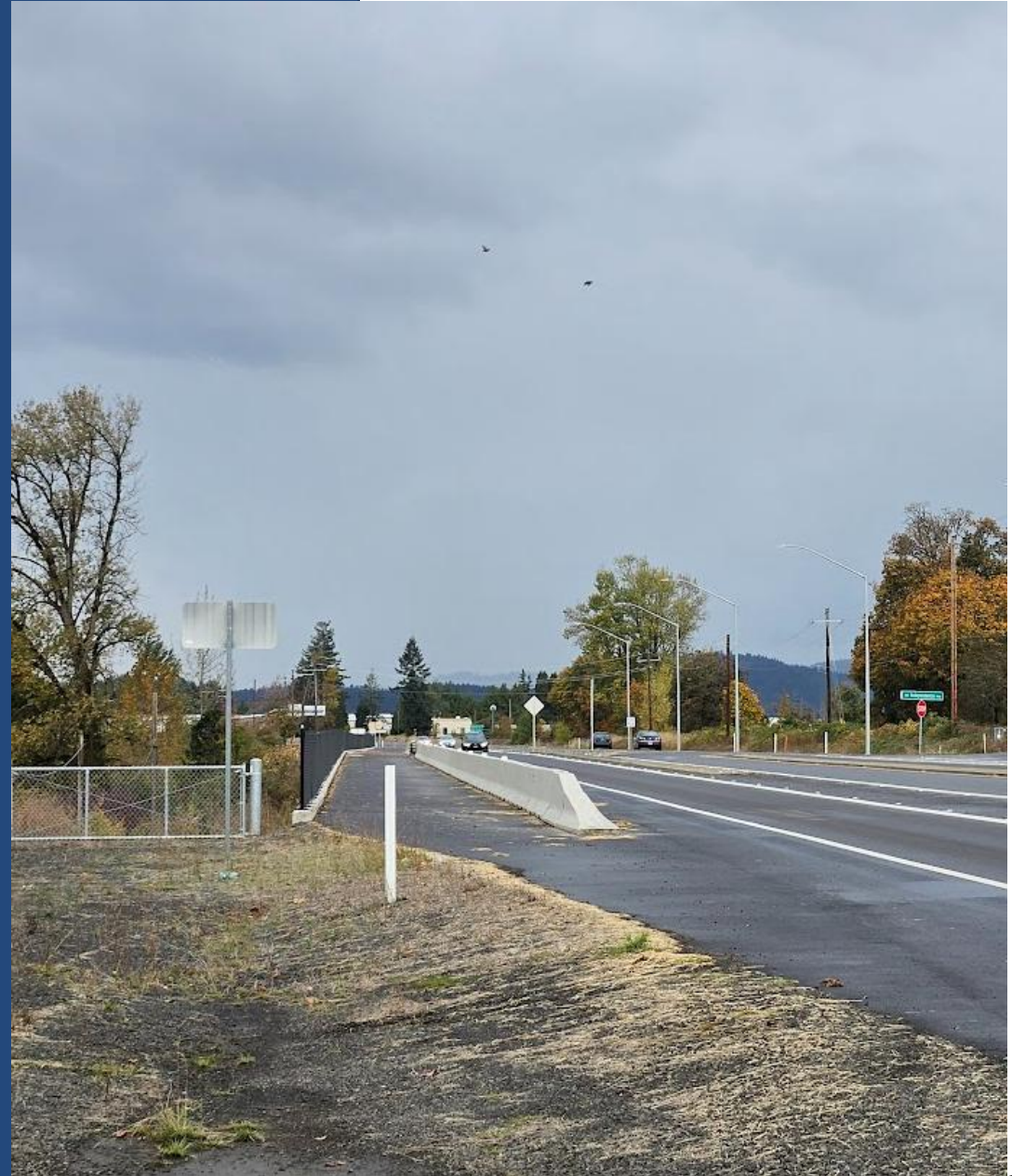
# Purpose and Goals

- Develop an all-ages, all-abilities walking, biking, and rolling facility between Corvallis and Albany
- Support transportation, recreation, and tourism
- Enhance safety and comfort for people walking, biking, and rolling

# Schedule



# Alignment Screening



# Process

- Develop evaluation criteria
- Initial screening of possible alignments
- Narrow to “short list” of alternatives
- Comprehensive evaluation of short listed alternatives
- Choose recommended alternative based on alignment with goals, feasibility, cost, and feedback



# Evaluation Criteria

## Project Outcomes Criteria

- User Safety and Comfort
- Connectivity
- Community and Project Partner Support

## Feasibility Criteria

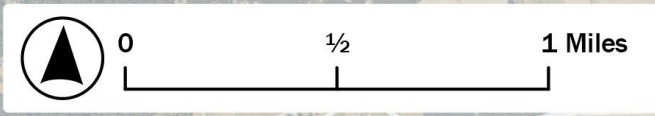
- Zoning, Land Use, and Permitting
- Impacts to Built and Natural Environments and Archaeological, Cultural, and Historic Resources
- Utility Conflicts
- Right-of-Way Needs
- Interaction with Rail
- Planning-Level Costs

**Segment 1:**  
NE Merloy Avenue to NW Independence Highway

**Segment 2:**  
NW Independence Highway to Scenic Drive NW

**Segment 3:**  
Scenic Drive NW to Rainwater Lane NW

**Segment 4:**  
Rainwater Lane NW to North Albany Road



# Initial alignments



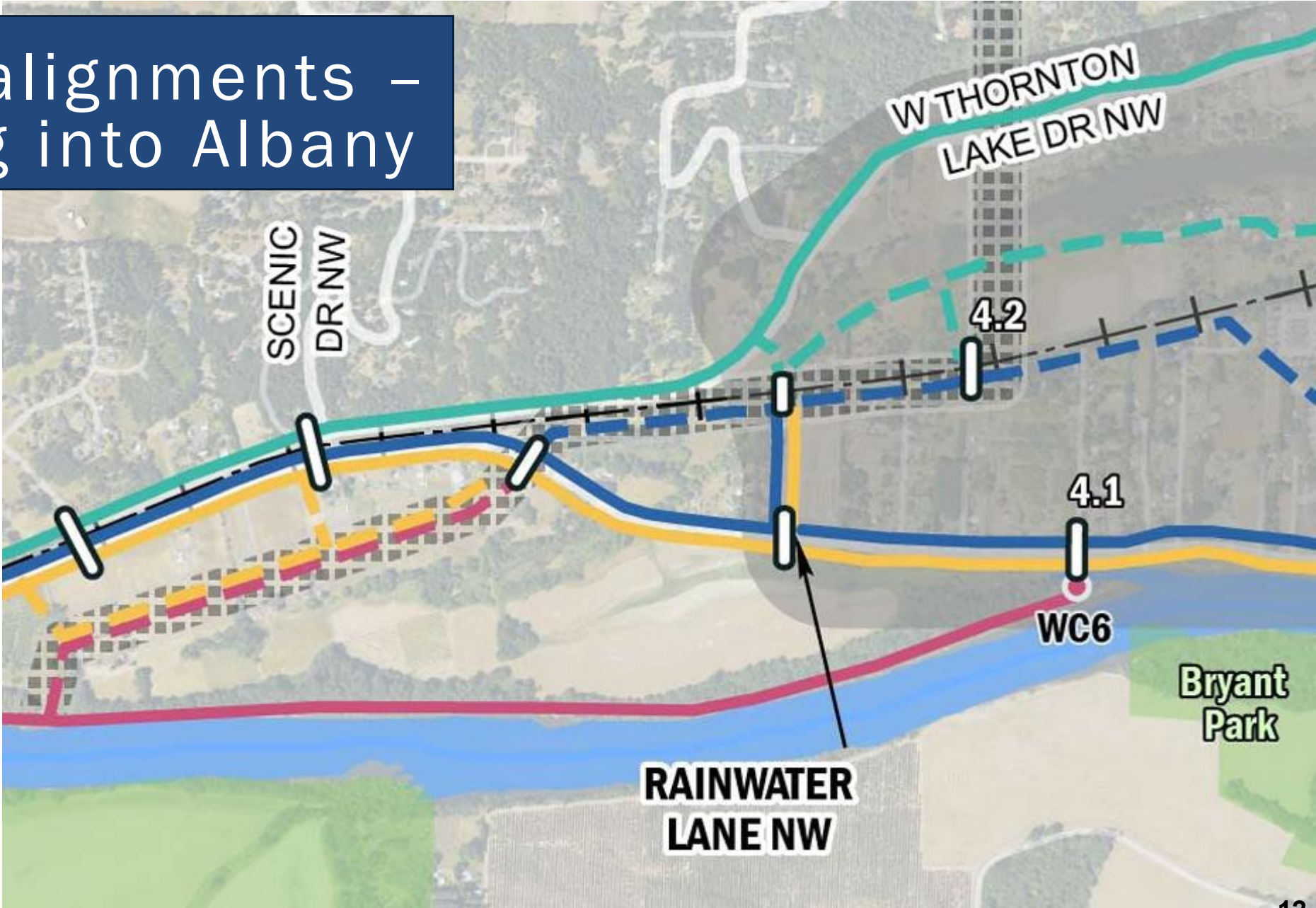
**Alignment Alternatives**

- Alt A: North of Rail
- Alt B: South of Rail North of U.S. 20
- Alt C: South of Rail and U.S. 20
- Alt D: River-adjacent
- Bonneville Power Admin. Easement
- Potential Crossing
- Existing Crossing Structure
- Water Crossing Consideration
- Existing Water Crossing
- Rail Network
- Parks
- Waterbody



Sources: Benton County, Linn County, Oregon Department of Transportation (ODOT), OregonStatewide Imagery Program (2024), DOGAMI

# Initial alignments – coming into Albany



# Screening Results – key findings

- **North side alignments:**

- Between rail and highway – not feasible
- North of rail – possibly? ROW acquisition and steep slopes
- At least one crossing required

- **South side alignments:**

- Proximity to homes/driveways
- Floodplain/steep slopes
- At least one highway crossing required

- **Crossings:**

- Existing at-grade highway crossings are challenging and may not be feasible
- Existing rail crossings are challenging and may not be feasible
- New rail/highway over-crossings have high costs and potential impacts

**Segment 1:**  
NE Merloy Avenue to NW Independence Highway

**Segment 2:**  
NW Independence Highway to Scenic Drive NW

**Segment 3:**  
Scenic Drive NW to Rainwater Lane NW

**Segment 4:**  
Rainwater Lane NW to North Albany Road

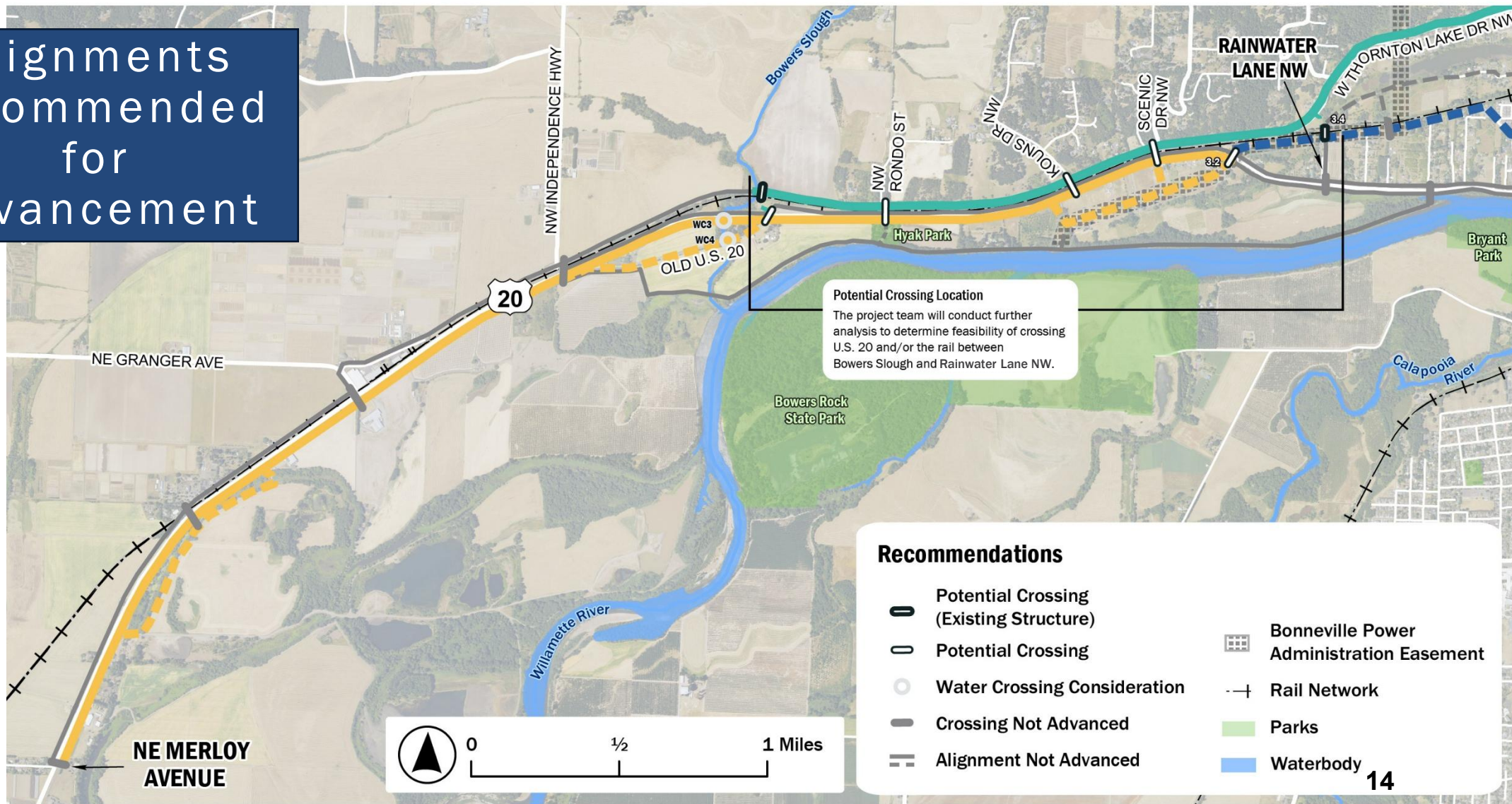
ALT C1  
ALT C1.1

ALT A2  
ALT C2  
ALT C2.1

ALT A3  
ALT B3.1  
ALT C3










ALT A4  
ALT B4.1

Alignments recommended for advancement



**Potential Crossing Location**  
The project team will conduct further analysis to determine feasibility of crossing U.S. 20 and/or the rail between Bowers Slough and Rainwater Lane NW.

**Recommendations**

-  Potential Crossing (Existing Structure)
-  Potential Crossing
-  Water Crossing Consideration
-  Crossing Not Advanced
-  Alignment Not Advanced
-  Bonneville Power Administration Easement
-  Rail Network
-  Parks
-  Waterbody



Sources: Benton County, Linn County, Oregon Department of Transportation (ODOT), OregonStatewide Imagery Program (2024), DOGAMI

# Outreach Results



# Overview

- **Purpose of Milestone #1**
  - Introduce project phase to the community
  - Gather general feedback on community priorities and needs
  - Assess support for improvements, identify issues and concerns
  - Inform development of alternatives
  - Set up future project phases for success

# Summary of Methods and Activities

## Sept – Nov 2025

- Project Flyer
- Direct Mailer
- Two (2) Project Videos
- Tabling at Albany and Corvallis Farmers' Markets
- Printed Survey and Comment Cards
- Online Open House, Survey, and Comment Map
- ODOT Website Update
- Spanish Language Translations and ADA Accommodations

**Corvallis to Albany Shared Use Path**  
U.S. 20 | NE Merloy Avenue to NW Rainwater Lane

This new phase of the Corvallis to Albany shared use path will build off recent improvements to develop a safe and comfortable walking and rolling route along a section of U.S. 20 in Benton County.

Expanding on the completed segment between NE Pilkington Avenue and NE Merloy Avenue, this new phase will identify a preferred alignment along U.S. 20 from NE Merloy Avenue to the vicinity of NW Rainwater Lane. The project continues the community's long-standing vision for a regional path connecting Corvallis and Albany. Funding for this project is provided by the Oregon Carbon Reduction Program, Oregon Community Paths Program and Benton County.

**What will this project do?**

- Develop a continuous, low-stress shared use path between Corvallis and Albany that supports walking, biking and rolling for people of all ages and abilities.
- Build on completed and planned segments to create a seamless connection along U.S. 20, enhancing access to parks, schools, transit and community destinations in both Corvallis and Albany.
- Engage residents, farmers, businesses and local partners to ensure the path respects property concerns and the environment.
- Lay the foundation for future final design, environmental review and construction.

**Engagement Timeline**

2025			2026			2027
Summer	Fall	Winter	Spring	Summer	Fall	Winter
Milestone #1			Milestone #2			Milestone #3

**Milestone #1 | Fall '25**

- **Project Kickoff:** Introduce project to community; gather input on local needs, priorities and values to inform development of path alternatives.

**Milestone #2 | Spring '26**

- **Alternatives Analysis:** Gather community input on different path alignments and concepts; refine based on community feedback.

**Milestone #3 | Winter '27**


- **Confirm Concepts:** Share refined path design and alignment; show how community input shaped the final concept and outline next steps.

**Get Involved!**



Join us this fall as we engage community members in-person and online to share project information and gather community input on how to make it easier to walk, bike and roll between Corvallis and Albany.

- **Corvallis Farmers' Market** | Oct 18 | 10 a.m.-noon  
NW 1st St, Corvallis OR 97330
- **Albany Farmers' Market** | Oct 18 | 10 a.m.-noon  
SW Ellsworth & SW 4th Ave, Albany, OR 97321
- **Online Open House and Survey** | Oct 16 - Nov 21

Scan the QR code or use the link below to learn more, provide feedback and sign up for updates!

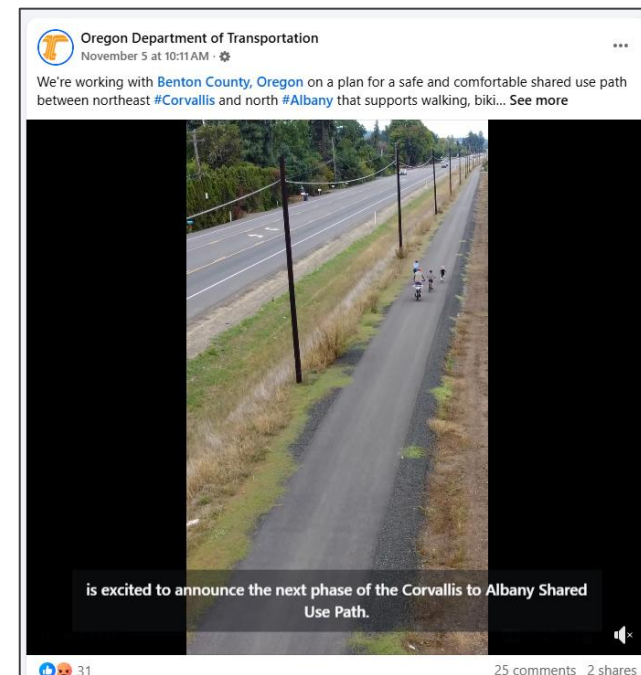
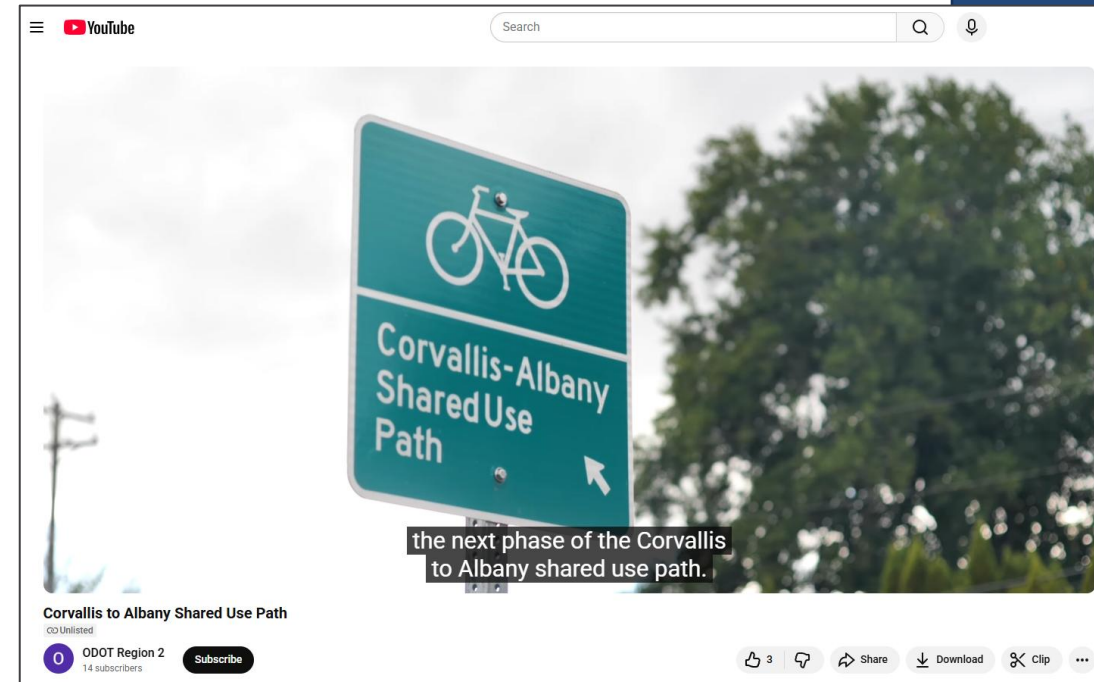
 <https://direc.to/nt2X>

Accessible parking is available on 1st Street north of Van Buren in Corvallis and at 4th & Ellsworth in Albany. Accommodations will be provided to people with disabilities and materials can be provided in alternative formats. Please contact [projects@odot.oregon.gov](mailto:projects@odot.oregon.gov), 541-257-7669 or statewide relay 7-1-1 at least 48 hours in advance.

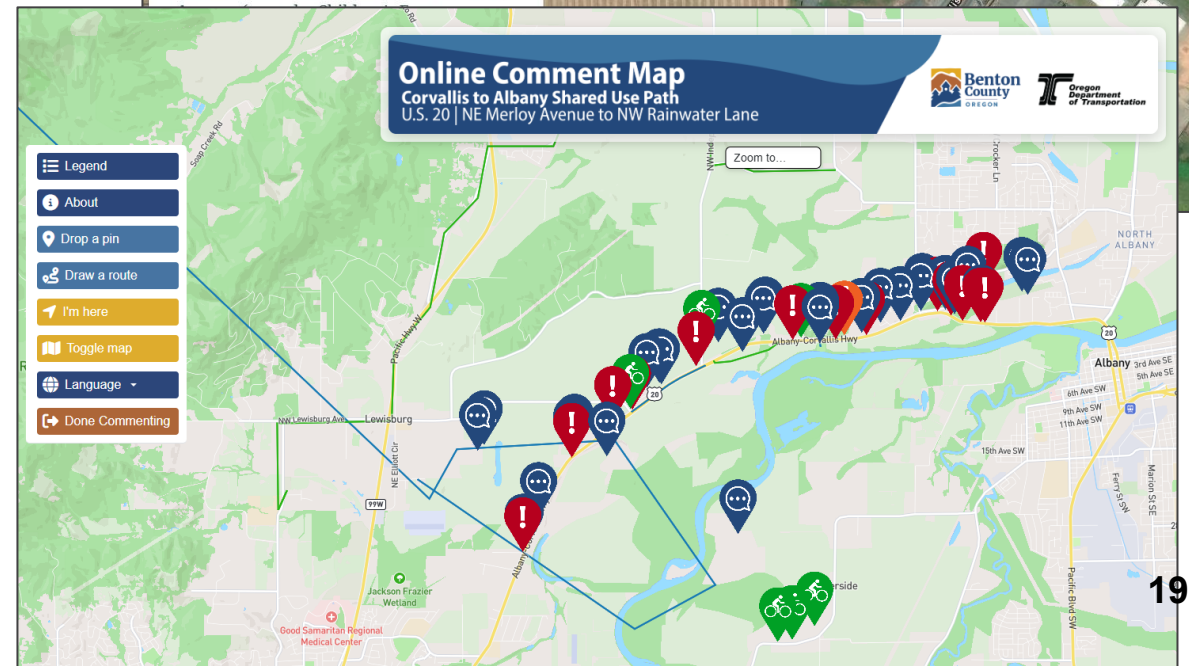
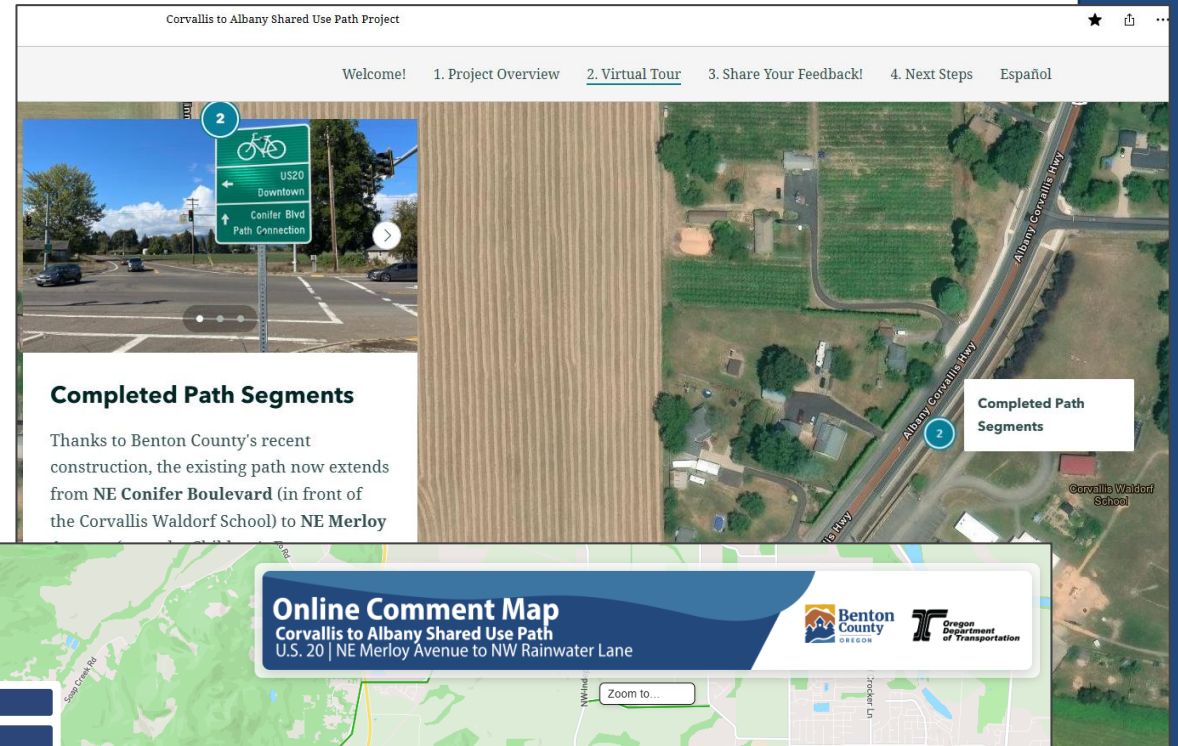
# Project Videos

- Partnered with *MetroEast Community Media* (Gresham, OR)
- 256 views on YouTube
- Featuring Benton County Commissioner Pat Malone, business owners, and other area community members.



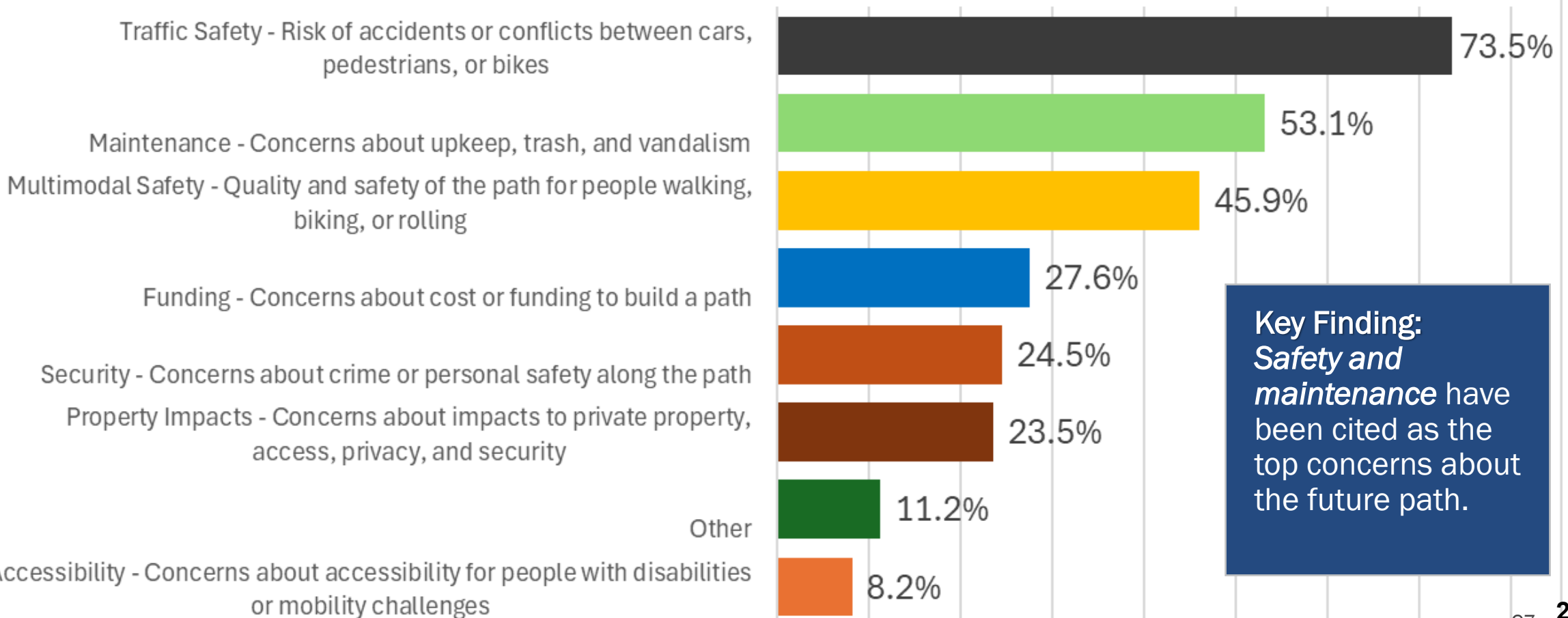
# Online Open House and Survey

- Interactive online open house, scroll and click platform
- Virtual Tour of project area, opportunities, and issues
- Survey and Comment Map
- **1,178 views** since Oct 16 Launch (Avg. 25/day)
- **99 surveys** completed
- **9 online comment forms** completed



# Survey Findings

What are your top three (3) biggest concerns about the future path along U.S. 20 between Corvallis and Albany?



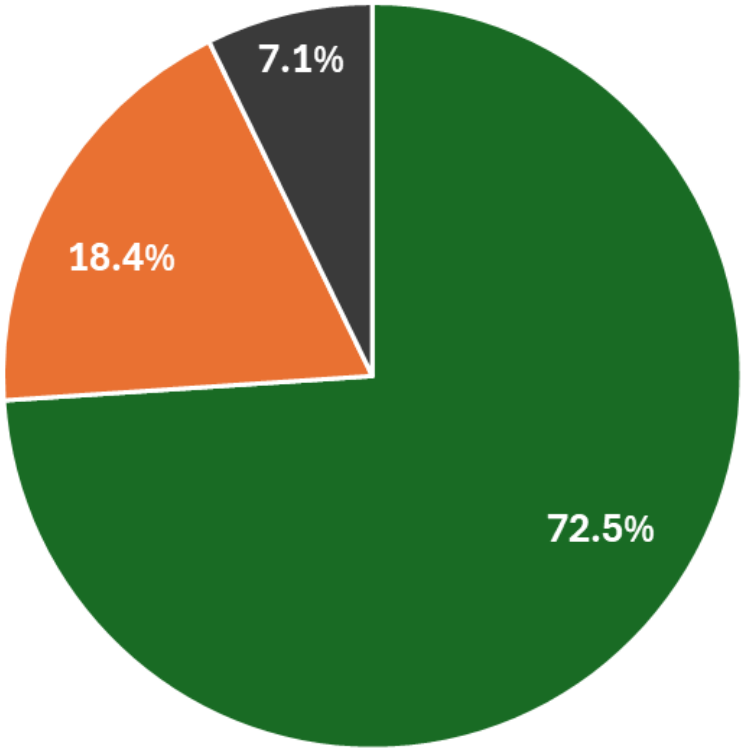
**Key Finding:**  
*Safety and maintenance* have been cited as the top concerns about the future path.



# Survey Findings

**Key Finding**  
Most participants (73%) *generally support* a shared use path along U.S. 20 between Corvallis and Albany.

Overall, do you support developing the shared use path along U.S. 20 between Corvallis and Albany?



n=96

■ Yes ■ No ■ Unsure

n=96 **22**



# Next Steps

- Corridor outreach to property owners/residents
- Begin advancing design on narrowed set of alternatives
- Develop initial recommended alternative
- Review alternatives and findings with the community in Spring 2026
- Advance design further, wrap up toward end of 2026 – set stage for construction funding



Comments or Questions?



/BentonCoGov



@BentonCoGov



@BentonCoGov



/BentonCountyGov



Benton County